

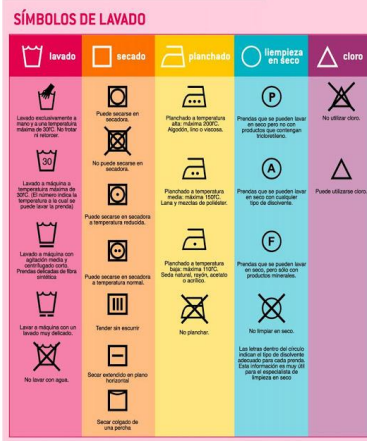
GHP (Good Hygiene Practices)

Due to Ethic Logistic's drivers does not handle merchandise or come into contact with it, generally being their sole mission to transport the conditions set, and therefore the risk of contamination is minimal due to lack of hygiene, from the organization it is specified basic standards, and considering that the driver is the image of the organization wherever he goes. In general:

- Always show a general aspect of proper hygiene and clean clothes.
- Take special care of hands and nails.
- Do not eat or smoke when on duty at the customer's premises, except in designated areas for this purpose.
- Clothing must be always in good conditions. There is no need for a special washing in a laundry, being washed for the drivers themselves.

Although not generally come into contact with the product, keep in mind that we are in the food industry and must follow specific guidelines.

CLOTHES AND SHOES MOST BE USED IN THE APPROPRIATE CLEANING CONDITIONS.



PROTECTION EQUIPMENTS MUST BE USED IN THE WAY THE COMPANY



TAKING CARE AND CLEANING HANDS AND NAILS IS A MUST. HANDS MUST BE CLEANED AFTER GOING TO THE TOILETE.



IN CASE OF INJURIES,
THOSE MUST BE
COVERED WITH
COLOURED PLASTERS



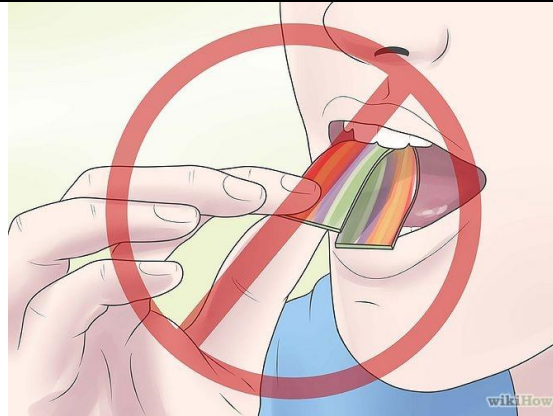
RINGS, BRACELETS AND
NECKLACES ARE
FORBIDDEN



IT IS FORBIDDEN TO
BRING WRITTING TOOLS
BEHIND YOUR EARS.



EATING, SMOKING AND DRINKING IS FORBIDDEN. IT IS ONLY ALLOWED IN AUTHORIZED AREAS.



SMOKING IS FORBIDDEN. IT IS ONLY ALLOWED IN AUTHORIZED AREAS.



SPITING IS FORBIDDEN, COUGHING OVER THE GOODS MUST BE AVOIDED.

